



Luton Community Paediatrics Service - Autism Spectrum Disorder (ASD) journey from referral to diagnosis

Edwin Lobo Centre, Redgrave Gardens, Luton

November 2021

To prevent the spread of COVID-19, a blend of face to face, virtual and telephone appointments are offered matched to the needs of each child and family.

Please remember every child is different and therefore, the journey from referral to diagnosis and the time this takes will be different for each child.

One assessment tool or multiple tools may be needed to inform a diagnosis. These tools can include:

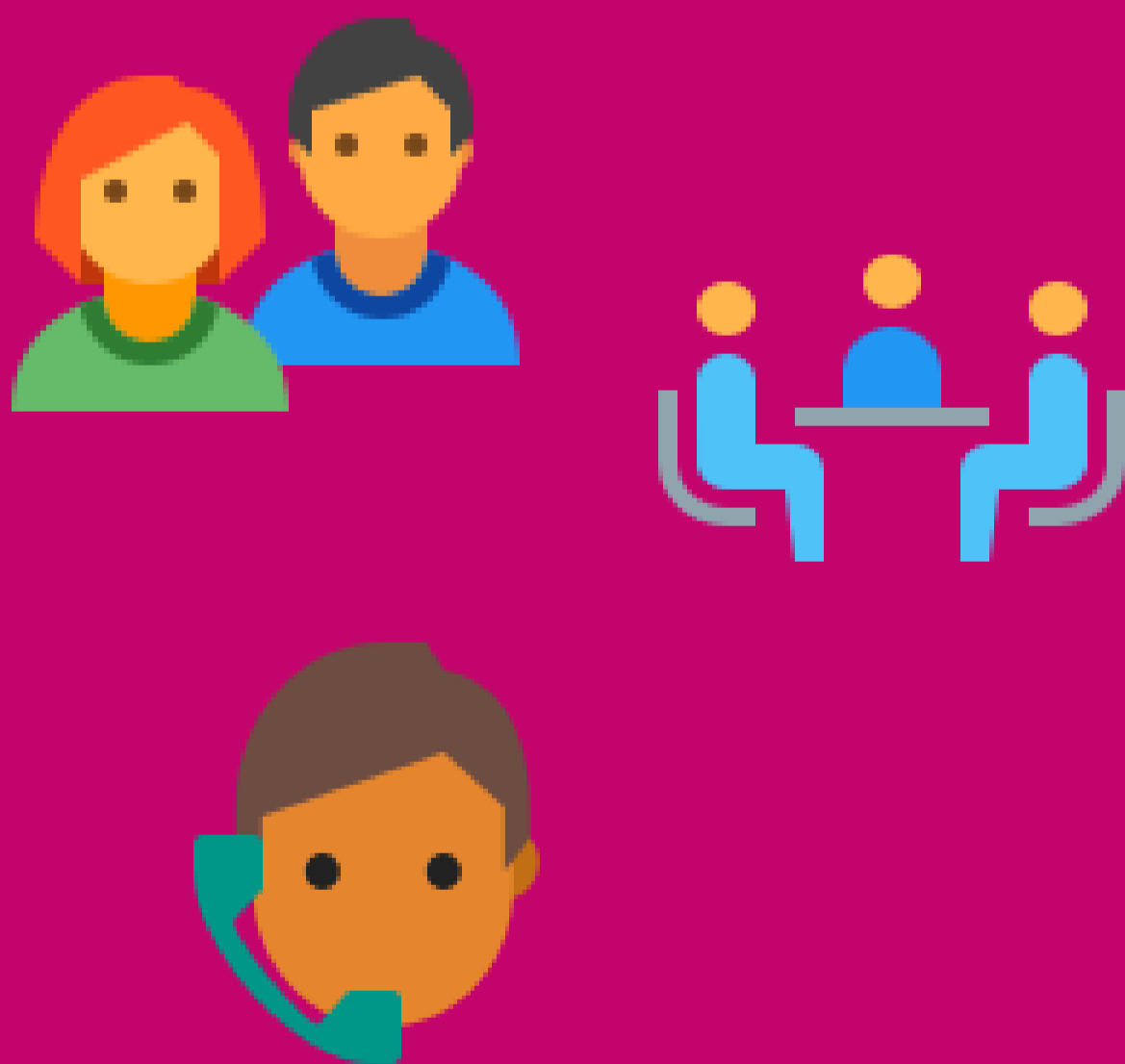
- History taking from parent/ carer
- Physical examinations
- A BOSA (Brief Observation of Symptoms of Autism) assessment
- School observation assessments

How long will my child wait for a BOSA appointment?



- Children are seen according to clinical priority
- As each child may need a variety of different assessment tools to inform a diagnosis, it is not possible to give an exact indication of the time that this process will take
- As an example, the average wait for a BOSA assessment is currently 25 weeks

What is the service doing to help?



We are taking action to try to improve our waiting times:

- Additional BOSA assessments are available.
- Neurodiversity Diagnosis Support Pack launched (link below)
- Two new posts being recruited to support children and families waiting for ASD diagnostic assessment.
- ADOS/BOSA staff training completed to increase in house capacity.
- SEND facilitator supporting families with pre-school children waiting for conclusion of their diagnostic assessments.
- BOSA video and resources launched to help families understand what to expect from the BOSA assessment.

Where can I go for help in the meantime?



You can find extra help here:

- BOSA Resources: <https://www.cambscommunityservices.nhs.uk/luton/childrens/services/community-paediatrics/bosa-assessments>
- Diagnosis Support Pack: <https://www.cambscommunityservices.nhs.uk/beds-luton-community-paediatrics/diagnosis-support-pack>
- Our new referral pack launching soon, making it easier for referrals of children and young people into our service.