

For further information about this service contact:

### Luton

Edwin Lobo Centre  
Redgrave Gardens  
Luton LU3 3QN  
Tel: 0300 555 0606  
Email: [edwinlobocomms.S1@nhs.net](mailto:edwinlobocomms.S1@nhs.net)

### Bedfordshire

Child Development Centre  
Hill Rise  
Kempston,  
Bedfordshire MK42 7EB  
Tel: 0300 555 0606  
Email: [ccs.beds.childrens.cdc.admin@nhs.net](mailto:ccs.beds.childrens.cdc.admin@nhs.net)

Union Street Clinic  
Union Street  
Bedford MK40 2SF  
Tel: 0300 555 0606  
Email: [ccs.paediatricadminteam-unionstreet@nhs.net](mailto:ccs.paediatricadminteam-unionstreet@nhs.net)



If you require this information in a different format such as in large print or on audio tape, or in a different language please contact the service on the details above.

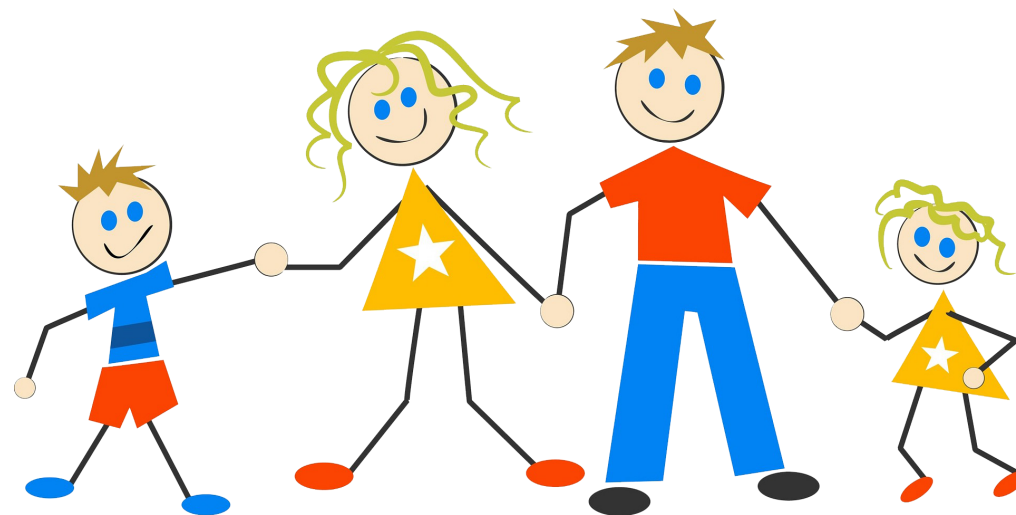
If you have any compliments about this service or suggestions for improvements, contact our Patient Advice and Liaison Service on 0300 131 1000 (charges may apply depending on your network) or email: [ccs-tr.pals@nhs.net](mailto:ccs-tr.pals@nhs.net).

For free, confidential health advice and information 24 hours a day, 365 days a year please contact NHS 111.

## Child Protection Medical Assessments

### 3. Information for young children

## Community Paediatrics



# Hello

Welcome to the Edwin Lobo Centre.

You have come today because someone is worried about you at home or at school.



# What will happen today?

You will meet a children's doctor called a community paediatrician.

There will be toys in the doctor's room for you to play with.

The doctor will speak to you and the grown-ups who have come with you about why they are worried.

The doctor will check that you are growing properly and that you are healthy.

If you have been hurt the doctor will check this too to make sure you are OK.

The doctor may take some special photos of you.

You can tell the doctor if you are worried or scared about anything. The doctor will try to help you.

