

Luton

Edwin Lobo Centre
Redgrave Gardens
Luton LU3 3QN
Tel: 0300 555 0606
Email: edwinlobocomms.S1@nhs.net

Bedfordshire

Child Development Centre
Hill Rise
Kempston,
Bedfordshire MK42 7EB
Tel: 0300 555 0606
Email: ccs.beds.childrens.cdc.admin@nhs.net

Union Street Clinic
Union Street
Bedford MK40 2SF
Tel: 0300 555 0606
Email: ccs.paediatricadminteam-unionstreet@nhs.net



If you require this information in a different format such as in large print or on audio tape, or in a different language please contact the service on the details above.

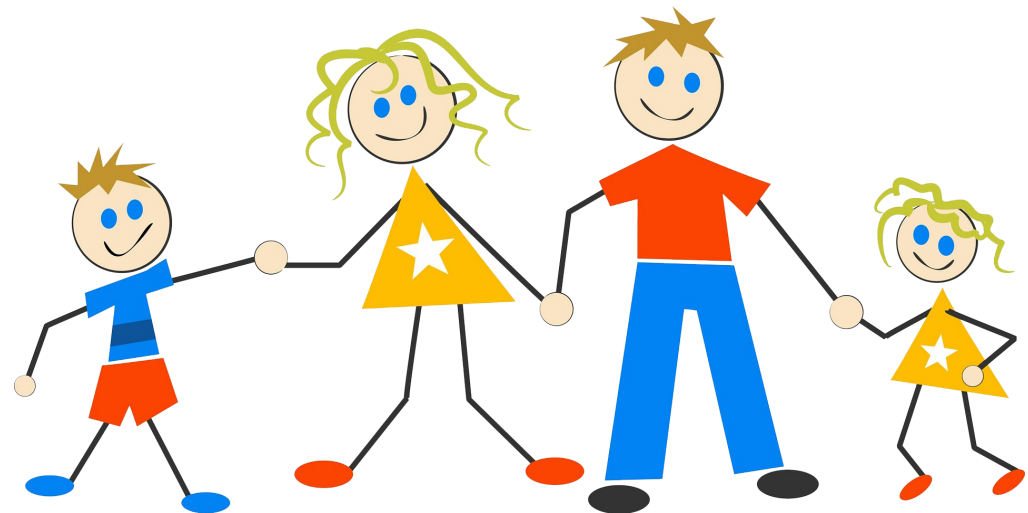
If you have any compliments about this service or suggestions for improvements, contact our Patient Advice and Liaison Service on 0300 131 1000 (charges may apply depending on your network) or email: ccs-tr.pals@nhs.net.

For free, confidential health advice and information 24 hours a day, 365 days a year please contact NHS 111.

Child Protection Medical Assessments

1. Information for children and young people

Community Paediatrics



Introduction

This leaflet will explain what will happen at your appointment today.

What is a child protection medical assessment?

This is a general check of a child's health and wellbeing. At the centre this is carried out by a doctor called a community paediatrician.

The assessment may be required if:

- A child or young person has reported concerns about their care and safety at home (for example, to a teacher).
- A teacher or other professional is worried about a child's safety or wellbeing within their home and family.
- Another person such as a family member or neighbour is worried about a child's care.

Who will be there?

- Your parent or carer may be present but you can choose if you would like to see the doctor on your own.
- A social worker will be present to support you and to speak to the doctor.
- You may be seen with a brother or sister if they are also having an assessment.
- If you would like a chaperone (another person to support you during the examination) we will try our best to arrange this. This is usually another doctor.
- An interpreter will be arranged if required for you or your parent/carers.

What will happen at the assessment?

When you arrive

You will be able to wait in our family room before the assessment begins and the social worker may wish to speak to you first. You may have your weight and height measured before you see the doctor.

Seeing the doctor

- The doctor may speak to the social worker first while you wait in the family room.
- The doctor will then chat to you about your health and how you are feeling. They may ask you about your home, family, school, friends and relationships.
- It is important for you to discuss any worries you may have with the doctor.
- If you have any injuries the doctor will need to ask you about these.

Consent

- Children and young people under the age of 16 years can give consent (permission) for medical examination and treatment if the health professional believes they are mature enough to fully understand what is involved.
- If appropriate, the doctor will ask you to sign a consent form for the examination. You can change your mind even after you have signed the form and the doctor will always respect your wishes.
- Your parent/carers may also give consent for the examination.

The examination

The doctor will examine you when you feel comfortable. They will check that you are growing well, look at your teeth and skin, listen to your heart, etc. If you have any marks or injuries the doctor will need to look at these.

Photography

The doctor may feel it is important to take photographs of any marks or injuries you may have. They will always ask for your consent (permission) to do this. A second doctor may help to take the photographs.

What happens after the examination?

The doctor will explain to you if they feel you need any further medical care. The social worker will then speak to you about what will happen next after the appointment.

The doctor will write a report which is sent to the social worker and your GP.

Many children are seen here for a child protection medical assessment – you are not alone.

If you have reported your worries to a teacher or another person, you have done the right thing and this takes a lot of courage.

The doctor will always act in your best interests. Please speak to them about any worries you have.

Support for young people:

- **Childline:** Tel: 0800 1111 (free) www.childline.org.uk
- **ChatHealth:** Luton text 07520 616070
Beds text 07507 331450
- **Kooth** (on-line support and counselling): www.kooth.com
- **Tokko Youth Space (Luton):** Tel: 01582 544990, www.tokko.co.uk, info@tokko.co.uk