

CCS NHST Research Team

To facilitate Research at our Trust we have a dedicated Research Team.

We support all trust services to engage in research, including student projects, fellowships and adoption of National Institute of Health and Care Research (NIHR) Portfolio studies

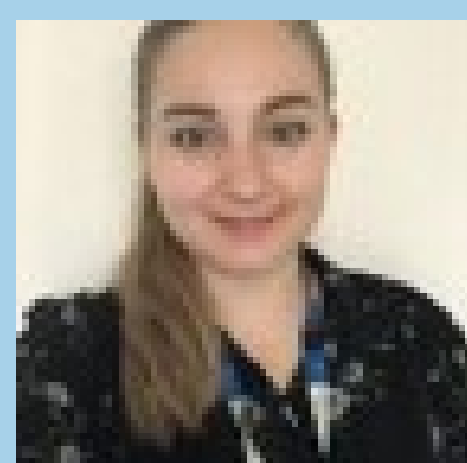
Meet The Team



Dr Paula Waddingham
PhD, Research Manager



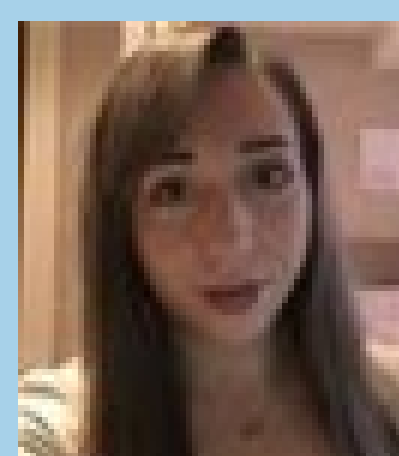
Dr Rachel Martell
PhD, Portfolio
Research Manager



Katherine Vale
RN, SCPHN, PgDip,
Clinical Research
Facilitator



Sam Nunn
MRes, Clinical
Research Facilitator



Lauren Moody
BSc, Clinical
Research Assistant



Jyothika Kumar
PhD, Clinical Research
Facilitator (Secondment)



Sophie Earnshaw
Clinical / Non Clinical
Research Facilitator

- Non-portfolio projects
- Research funding
- Applications for fellowship and funding
- Support for student and staff projects at BSc, MSc, PhD and post-doctoral levels
- Supervision, mentoring and coaching
- Support to develop feasible projects
- Trust Research Projects
- Equality, diversity and inclusion research strategy

- Patient Outcome Measures
- Participant in Research Experience Surveys (PRES)
- Adoption and delivery of Portfolio studies across all clinical services
- Research delivery and management of studies
- Student placements and Research Volunteers
- Facilitate Networking Opportunities
- Trust Research Champions
- Assessing feasibility of portfolio studies

We are committed to offering patients' opportunities to be involved in research in addition to promoting research culture across our workforce

Email: ccs.gen-cambs-researchhub@nhs.net

Twitter: @CCSNHSResearch

<https://nww.cambscommunityservices.nhs.uk/knowledge-hub/research>